

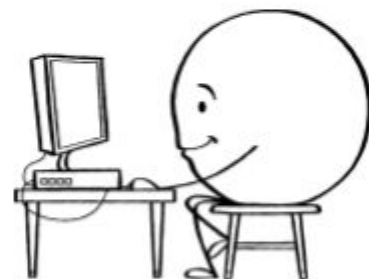
IMMACULATE CONCEPTION SCHOOL

7th grade SCIENCE (Period 2)
Sci Lab Mrs. Jones 2023-2024

GOALS.

- To develop a broad base of science content knowledge for future study in the life sciences.
- To develop the skills to design, carry out, and report laboratory investigations.
- To meet the science core curriculum content standards for students completing 7th grade in NJ.
- To develop the habits of mind of a scientist.
- To nurture a love of learning and of doing science!

EMAIL



Parents can contact me via email at sjones@icsclinton.org with any questions or concerns about science class or about academic progress.

Students contact me via email at sjones@icsannandale.org or GC.

WEBPAGE

My webpage, jonesics.weebly.com should be of use to you throughout the school year. Here will be the link and directions for the online textbook, the safety policies, supply list, Current Event directions, and photos of you working in class.

GOOGLE CLASSROOM

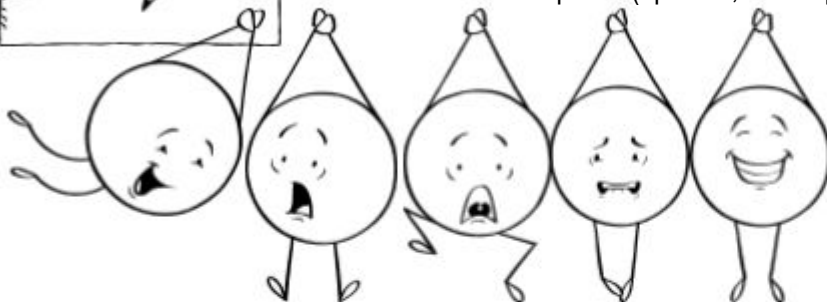


SUPPLIES



All students are required to bring to class:

- Chromebook
- Earbuds
- Green three-subject notebook
- 13 pocket folder to carry and store handouts
- Blue/black pens
- Pencils/eraser/highlighters (3 colors)
- Assignment book
- Pencil sharpener (optional, but helpful!)



POWERSCHOOL

Grades will be posted on PowerSchool for you to access.

- If there is an assignment description, you need to click on "view" to read it.
- If there is a comment in addition to a grade, you need to click on "view" to read it.
- If an assignment has not been collected yet, you will see "- -".
- A "green check mark," indicates the assignment has been turned in but has not been graded yet OR that it is a collected only assignment and will not be graded.
- "Missing" indicates that the assignment has not been turned in yet. The grade will be a 55% until the assignment is turned in.
- If an assignment is missing due to an absence, you will see both the "missing" and "absent" symbols but there will be no grade. If the assignment is not turned in upon your return, a grade of 55% will be entered until the assignment is received.

GRADING

A points system is used for grading. The amount of points will vary based on the assignment:

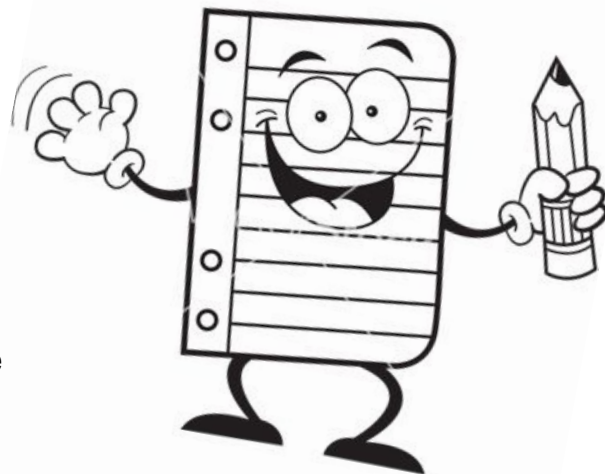
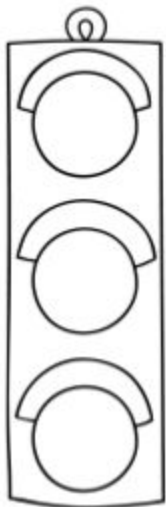
- **Major Assessments - 50 to 100 points**

- Tests
- Quizzes
- Laboratory work and lab reports
- Projects/presentations
- Midterm exam

- **Classwork/Homework - 5 to 40 points**

- Reading/writing assignments in class & at home
- Online assignments
- Classwork
- Google Classroom assignments

- **Science Fair - 25% of 4th MP grade**



Tests

Tests will be announced at least five school days prior to testing.

Test material will be taken from notes, homework assignments, quizzes, textbook chapters, Google assignments, and labs.

Quizzes

There will be announced (at least two or three days notice) quizzes throughout each report card quarter.

Quizzes will cover small blocks of material and will help you prepare for tests.

Lab Reports

Lab report work will be graded on scientific methods, precision and accuracy of results, accuracy of calculations, laboratory techniques, report format (for formal lab reports), and the ability to reach sound conclusions.

It is the student's responsibility to schedule any makeup lab work missed due to absence. Labs are especially time-sensitive!

Most labs will be completed in groups; however, conclusions must be written in your own words.

Projects/Presentations

Projects and presentations will be graded using a rubric, which will be provided to students.

Some projects are completed in groups. All students in the group are expected to participate and contribute to the final product.

If you have a concern about productivity within your group, you must bring it to Mrs. Jones's attention ASAP.

Online Textbook Assignments

--Occasionally, you will be assigned work to complete online via the interactive textbook. There will be a window of time during which you can complete the assignment(s). If you fail to complete the assignment(s) within that time frame, you will receive a 55%.

--To log in to the system, go to [hmh Ed login](#) and input your username and password. Username is first initial last name (all lowercase) 2025 and your password is onlinescience2025. See "Online Textbook" in Google Classroom if you are having trouble logging on.

--To access assigned work, click on "Assignments". Make sure to click "I'm Done" to the right of the assignment when finished.

Homework

Homework is expected to be turned in on time. There is one excused homework per quarter--may turn in one day late but must have parent note.

Unfinished classwork becomes homework and is due the following day. Graded assignments that are late will lose 5% per day.

Once an answer key is posted, late work will not be accepted.

Try As Hard As You Can to be in Class Everyday!

Your absence does not excuse you from homework assignments or class work.

It is your responsibility to get missed papers and assignments on the day you return and submit the assignment(s) to Mrs. Jones by the due date plus however many days you were absent. If an assignment was given before your absence, that assignment is to be completed and returned on the day you return to school.

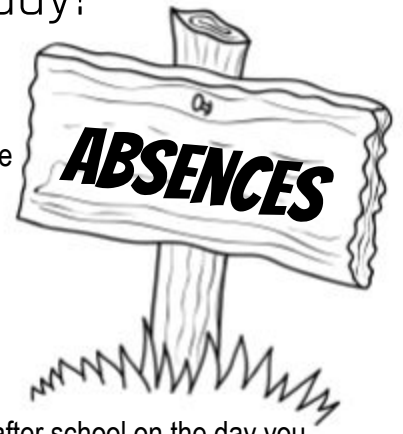
Please check Google Classroom and PowerSchool to see what you missed!

Please submit work from absences with the date of your absence written at the top of the page, for example: Absent 9/15/23.

If you are absent on the day of a test or quiz, you will take the test or quiz during class or after school on the day you return, unless you have contacted me to make other arrangements.

If you are absent on the day of a lab, please come see Mrs. Jones immediately to schedule a time after school or during recess to make up the lab. Please be aware that many lab materials are time-sensitive so you have a limited amount of time to make up a lab before it will go into the gradebook as a 55%!

If you come to school late and miss class, or if you leave school early you must see Mrs. Jones before leaving school to hand in any assignments and/or schedule any makeup work.



BEGINNING OF CLASS PROCEDURE

When you arrive to class, go directly to your assigned seat and sit quietly. Take out your notebook and something to write with. If an assignment is due, take it out.

If there is a Science Starter posted on the board, begin working on it once you are seated. Some Science Starters may be an assignment to complete on Google Classroom. In this case, you will quickly take out your Chromebook and get started!

You can earn extra credit on every test by turning in the following study materials (5 points maximum). The maximum grade on a test is 100%. You may study with another student, but you must **EACH** make **YOUR OWN** study materials. **No points will be given if students have the same study materials.**

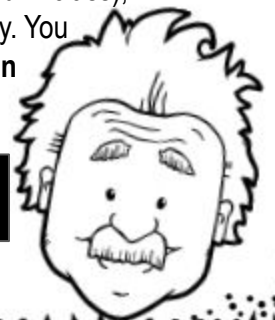
- 1 to 2 points – vocabulary (definitions written (on paper or index cards) or typed on the Google Doc in Google Classroom)
- 3 to 4 points – outlining the chapter or answering the study guide questions on a separate piece of paper or on the Google Doc in Google Classroom.

Depending on the test, you might be given the opportunity to make corrections to increase your grade. To do so, you must correct ALL of the incorrect answers, write WHERE you found the correct answer (Google is not acceptable, it must be from an assignment completed in class), write WHY the question was answered incorrectly and RETURN it the following day. You will earn back $\frac{1}{4}$ point for each question answered correctly. **This is only an option if all homework has been turned in since the last test.**



"You never fail until you stop trying!"

~Albert Einstein



CLASS



EXPECTATIONS

Our class will be conducted according to the guidelines stated in the ICS Student Handbook. Any consequences regarding misuse of Chromebooks in class will be given as per the Technology Acceptable use Policy.

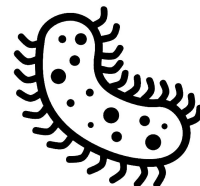
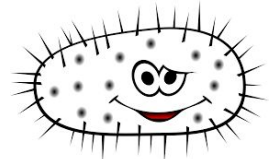
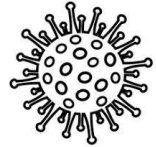
1. Be in your seat when class begins. No detours through the classroom that would cause disruption!
2. Be on task during group work and individual work. Work *cooperatively* during group work. During stations activities, stay at your station until you are told to rotate.
3. Participate (Focus, be attentive, be an active participant, and use eye contact)
4. When asking a question, raise your hand and get permission to speak. Please do not call out.
5. Listen carefully to directions in the laboratory. Disruptive behavior in class and especially in the lab can be dangerous and will not be tolerated. Laboratory misconduct will result in termination of the lab assignment.
6. Follow all laboratory safety guidelines.
7. Do your part to keep the classroom clean! Return materials to the proper place.
8. Respect yourself, respect your classmates, and respect your teachers.

Possible consequences for poor decisions:

- ★ Warning
- ★ Notification sent home
- ★ Logical consequence
- ★ Detention

TOPICS

- Scientific inquiry
- Experimental design
- Scientific Method
- Engineering Design Process
- Laboratory safety, equipment, and technique
- Metric measurement
- Microscope Skills
- Cells
- Cell processes
- Organization of organisms
- Body systems working together
- Genetics
- Heredity
- Evolution
- Ecology
- Science Fair



CLASS PLEDGE

We pledge to listen and focus in class and to bring all of the necessities. We will also ask for help if needed and be positive and kind. Finally, we pledge to do our best.

I, _____,
have read and understand the above class policies:

Sign: _____

Date: _____

**LOOKING FORWARD
TO A
GREAT YEAR !!**

